



**HOME  
START**

**Kirklees**

**25** YEAR

**ANNUAL REPORT AND ACCOUNTS 2023-24**

## Contents

Chair's Welcome	2
Early Intervention & Prevention Model	3
25 years of Home-Start Kirklees	4
Family Case Study: Mental Health Support	6
Peer Support Groups: Isolation & Loneliness	8
Volunteers & Advisers	10
Young Parents' Service	12
Addressing Families' Needs	14
Family Case Study: SEND	16
Stakeholder Feedback	18
Director's Report	20
Business Development	21
Treasurer's Report	22
Summary Accounts	23

## Chair's Welcome

During the past year Home-Start Kirklees has continued to thrive, manage and navigate some serious contractual issues whilst pushing forward to expand reach and widen service delivery. The Thriving Kirklees Partnership ended in March 2024 with Kirklees Council taking over our contract to deliver family support from April 2024. It is reassuring to know that we are regarded as a reliable and valued provider of support for families with young children. The peri-natal period, (conception to 2 years) has such a fundamental role to play in developing and shaping children into adulthood (The Best Start in Life: A Vision for the 1001 Critical Days) - we are proud to be part of this movement.

We continue to receive funding from The National Lottery Community Fund, Garfield Weston Foundation and Henry Smith Charity to help retain our current service provision, whilst continuing in our quest to generate income to develop new types of support for families in need. This means investing in funding opportunities to enhance support for dads, children with special educational needs and disabilities and infant mental health.

Home-Start Kirklees has a fantastic staff team and a committed loyal and hard-working team of volunteers. Their commitment in supporting our communities is notable as the organisation flexes and responds to new and presenting needs of families.

The workforce is supported by a group of trustees and members and it is now two years since we became a Charitable Incorporated Organisation (CIO). During the next year, we will continue to seek funding to maintain our core work whilst expanding our reach so that we can support more families that need our help.

Sadly, in October 2023 our Trustee Barry Lee passed away following a short illness. Barry was instrumental in developing our business model and chaired the Business Development Committee. We would like to acknowledge Barry's dedication, time and support he gave to Home-Start Kirklees over the years.

**Vanessa Stirum**



8

**Our average  
length of  
support is  
8 months**

## Our Vision:

**Children will have the best start in life.  
Families will be safe, healthy and resilient.**

## Early Intervention and Prevention Model

Safeguarding children and vulnerable adults and protecting them from harm is embedded into every aspect of our charitable work. We work in a preventative way to provide safe and effective care that is bespoke to each family. This often requires a long-term intervention to build trust and for parents to have faith in our ability to effectively deliver support. We ensure that for parents there is no 'wrong door' to receiving support. We do not judge them or their circumstances. Our early intervention and prevention model provides a lens on addressing a family's needs before they escalate, making it economically viable to make savings in the longer term. Our volunteer infrastructure is of huge benefit to our communities and our local economy. We support families to thrive (THRIVE Framework for system change) and to prevent the need for risk support where families do need statutory intervention. We support families to work alongside other professionals, guiding them through processes, jargon and often we provide a conduit role in ensuring parents have a voice and the confidence to challenge when overwhelmed and frustrated. We encourage engagement and are advocates for other agencies when scepticism is a barrier for many parents. Where needed, we handhold parents into accessing other services.

Home-Start recruits, trains and supports volunteers to 'give back' to the community. We provide a springboard into progression opportunities. Three of our current staff members were former volunteers. In 2023-24, we ran six preparation courses and recruited 44 new volunteers.



25  
YEAR



# HOME START

## Kirklees

**1999:** Home-Start Kirklees was launched

**2000:** Home-Start had 39 volunteers available to support families and an employed staff team of 4


**2001:** First Home-Start family group drop in opened at Brian Jackson House

**2003:** We were visited by David Blunkett, MP & Home Secretary

**2004:** A £300,000 National Lottery Community Fund grant was awarded and the staff team was expanded

**2004:** A Kirklees Family Support Worker pilot was set up in the Deighton area. First Family Support Worker post in Kirklees

**2005:** The 'New to U' scheme was set up, funded by Kirklees Teenage Pregnancy Strategy - this evolved into our Young Parents' Service of today



**2006:** Home-Start secured new working premises at a disused Kirklees Neighbourhood Housing office in Dalton. The start of a 15-year tenure

**2009:** Home-Start UK founder Margaret Harrison visited for our 10th anniversary AGM

**2015:** A Nurturing Parents pilot was launched with funding from Kirklees Public Health. Volunteers were trained and upskilled to deliver key messages around Infant Mental Health

**2017:** Home-Start Kirklees entered into the Thriving Kirklees Partnership with 4 other key partners

**2019:** Home-Start Kirklees celebrated 20 years of supporting families

**2022:** Home-Start Kirklees moved to new premises at Bates Mill, Huddersfield

**2023:** Home-Start supported a record number of 293 families with 577 children



## Family Case Study: Mental Health Support

Home-Start Kirklees and my volunteer Lucy have changed my life.

When my Health Visitor suggested that she make a referral to Home-Start, I was unsure that I would want the support given that my experience of support services throughout my life had all been negative. I was at such a low point having fled to a different town due to domestic abuse, I decided things needed to change and to give it a go.

On the morning of the appointment with my Co-ordinator I sat on the doorstep waiting for her to arrive, almost certain that I would go through the motions during the appointment, agreeing to support that I actually never intended to take.

I was nervous talking to her but decided I would give the support a try and waited to be matched with a volunteer. During my wait, I received support from my Co-ordinator, who helped me with my mental health on my more difficult days. I was really grateful for the support but was pleased when a volunteer was allocated. I met Lucy and liked her instantly; she was

kind and funny and I felt like I had known her for years.

When Lucy first began visiting, I found it difficult as I had never had any consistent support in my life whilst I was growing up. I struggled to understand why someone I didn't know would give up their free time to help me, but as time went by, I began to really trust Lucy and found myself enjoying the time the girls and I spent with her.

I felt like Lucy really understood me and knew all the right things to say in situations I found stressful. Lucy really took the time to get to know me and the children and has never judged us, despite being around during some low points in our lives.

Lucy initially supported me practically around the home, our living conditions haven't always been the most appropriate and I found that when my mental health was bad, I was unable to complete the simplest of household tasks. Lucy gave me the encouragement and motivation to want to make changes and taught me how to tidy and organise things to make better use of the space in our home.

After a while, the house started to become less cluttered and Lucy would support me in making a manageable 'to-do' list to ensure cleanliness of the home. This eventually became fairly enjoyable and has become part of my daily routine – Lucy helped me understand not to put so much pressure on myself as big changes would take time.

Lucy has been a good emotional support to me and understands that my mood can be low and that my reactions to stressful situations are not always the best. Lucy helps me understand my feelings and gives me guidance on how I can deal with things calmly, in a way that is likely for me to get better results.

I have always struggled leaving the house independently. In time, I was able to recognise that being out of the house helped me to de-stress and I began to explore more places in the local community.

Lucy and I began to go out regularly and she helped me build my confidence by encouraging me to speak to people, something I have always found difficult to do.

When my youngest daughter started nursery Lucy recognised that I was feeling down about our unhealthy, sedentary lifestyle and encouraged me to join the local gym. She helped me understand how it would be beneficial to both my physical and mental health and joined me during my first few visits. Eventually, I built the confidence to attend independently on a weekly basis and it has become an important way of managing my mental health.

Lucy is always a listening ear at the end of a phone on difficult days and I know I can always go to her when I don't know what to do. She is always there through the good and the bad and I could never thank her enough for the support she has given.

I feel like a different person now. I have the confidence to leave the house and regularly enjoy days out with my girls.

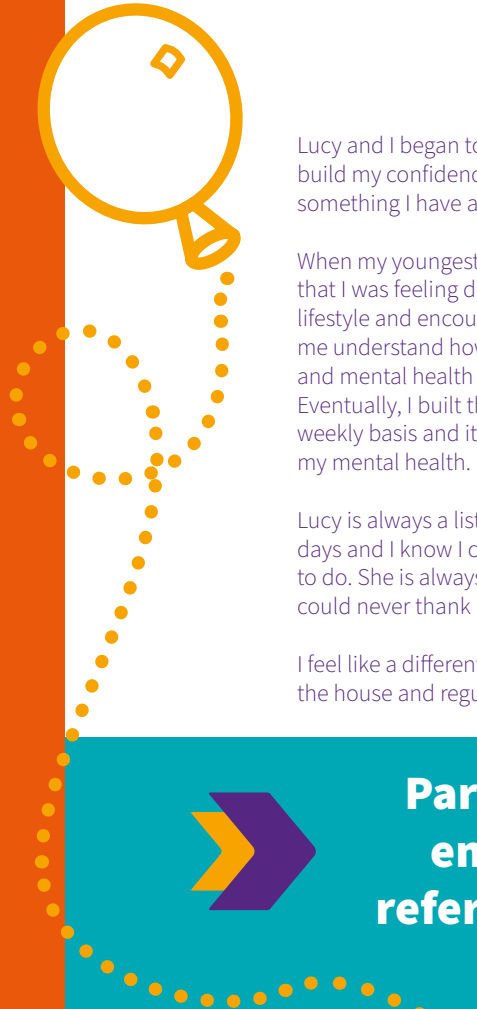
I recently applied and interviewed for a job and although I wasn't successful, I feel really proud of myself that I had the confidence to do it.

I am now learning to drive and have recently completed various online courses to enable me to build my skills in preparation for work.

My life has changed in so many ways and although there are still many improvements I would like to make; I am really starting to believe that my girls and I can have a good life.

I want to give my girls the life I never had, and Lucy has played a pivotal part in that.

There aren't enough 'thank you's' in the world for what Home-Start has done for us.



**Parents struggling to cope with their mental health & emotional wellbeing is one of the main reasons for a referral requesting support, with over 70% of referrals experiencing this issue**

## Peer Support Groups – Isolation and Loneliness

In 2023 we started a National Lottery funded project to help parents to feel less isolated and lonely, improve self-esteem and confidence and to cope better with their mental health. The project helps build resilience and supports parents to access local community-based provision. There are currently two well attended (referral only) peer support groups running weekly in Kirklees. Alongside the group sessions, our families have 1 to 1 bespoke support dependent upon their individual needs.

Social isolation is an ever-increasing problem. Extended families are often widespread across the country, or even the world, and local community support is often not accessible. Furthermore, the pandemic has changed the way people communicate and there has been a marked decrease in face-to-face interactions. We have found that initially some of our parents do not realise how isolated they have become and display anxiety in social situations. It is only after participating in group sessions that they start to recognise this. One of our group members recently said:



**“I did not realise that I was isolated at all until I started coming to group. At the start I really did not think I would enjoy coming because I thought it wasn’t my sort of thing. Now I look forward to coming every week and meeting up with other members outside of the group. I would not have even considered doing this when I started coming”**

We have spent time making the groups a welcoming and empowering place for our families and this has been reflected in the friendships that have developed and flourished. Group members regularly make plans with each other outside of our support: going to play gyms, art classes and local parks etc... They offer support and encouragement to each other, providing lived experience and advice when appropriate. One of our parents recently told us:

**“I have made an amazing group of friends! I really look forward to seeing everyone including staff – nothing is ever too much trouble”**

We have worked closely with local community providers, such as Kirklees Wellness Service, University of Huddersfield, Community Plus, Kirklees Libraries, Support to Recovery, Children’s Art School and many more, who have attended group sessions to provide information and support. This has helped families to access the professional support they need to improve their health and wellbeing by stopping smoking; taking regular exercise; being able to cook healthy meals on a budget; reducing anxiety and improving mental health.



**“My advice to anyone considering getting support from Home-Start would be just do it because it’s brilliant. It’s such a lovely place to come, the staff and other families are so friendly, and it has been the best support for me and my son. We love coming every week”**

Looking ahead, we are anticipating the need to expand group provision and look forward to continuing our work with partners to help improve families’ lives.

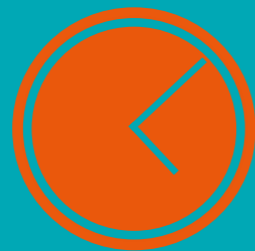


**Isolation or loneliness is one of the top 3 presenting issues - seen in 70% of referrals to Home-Start Kirklees consistently since 2020**

## Volunteers and Advisers

On average Home-Start Kirklees volunteers give us approximately 3 hours a week of their time. They work towards increasing confidence and independence in referred families by:

- offering support, guidance and practical help
- visiting families in their own homes, supporting in our groups or by telephone befriending
- respecting and protecting the dignity and identity of each of our supported families
- reassuring families that difficulties in bringing up children are not unusual, emphasising the positive aspects of family life



**5,200**  
Volunteer hours  
were given this year  
(excluding trustees)

- developing a trusting relationship with the family
- encouraging parents' strengths and emotional well-being for the ultimate benefit of their own children
- encouraging families to widen their network of relationships and to use services available in the local community

Many of our volunteers use their experience with us to move into employment or adult learning opportunities. Supporting volunteer progression is very important to us.

All our family support volunteers attend a mandatory 25 hour training course, split over 5 weekly sessions. The course covers topics such as confidentiality, equality, diversity and inclusion, personal safety, baby brain development, school readiness, safeguarding, communication and boundaries. They learn about trauma informed and reflective practice. They are consistently supported and guided by their allocated Co-ordinator who provides regular supervision.

Home-Start Kirklees are fortunate to also have a team of Advisers on call who offer expert advice, guidance and updates in their specialist field.



Almost  
**1,000**  
Home visits, remote  
support sessions  
and group sessions

Currently, we have Advisers who support with:

- HR and Employment Law
- Equity, Equality, Diversity and Inclusion
- GDPR/Data Protection
- Governance and Charity Law
- Family Law



Advisers support the charity in a voluntary capacity and we are grateful to have their expertise on board.

**“As soon as I knew about the work at Home-Start Kirklees and met the amazing team, I knew I had to volunteer as an EEDI advisor as I wanted to give back and make a difference to the diverse community I live in. My role is to support Home-Start Kirklees to become even better at working with all parts of the community and suggesting ways we can strategically embed this into everything we do. I get to make a difference and work with all levels of the business and it's humbling to be part of an organisation and work with colleagues who are so dedicated to genuinely making a difference to people's lives”**

Munir Majid, Equity, Equality, Diversity and Inclusion Adviser.

We would like to thank all our current Advisers: Joanne Hardcastle, Sarah Wickham, Munir Majid, Sue Whittles and Emma Pearmaine.

## Young Parents' Service

This service is scaled to the intensity proportionate to the degree of need and has supported 50 young parents aged 14-24 years (including 58 children) in 2023-24 with a holistic and bespoke approach. We support young parents to be the best parents they can be. We focus on building self-esteem and resilience to self-manage without the need for statutory intervention in the longer term.

**“Since Home-Start support everything has changed...I am way happier, leaving the house is easy now, it was a big chore before and I enjoy it now.....I feel more confident as a mum”**

We work with care leavers, families receiving statutory support, parents who have experienced domestic abuse. We work with those who are isolated due to the unexpected change in life becoming parents at a young age. Our weekly peer group sessions in Huddersfield and Cleckheaton are welcoming, safe and informative, giving young parents opportunities to learn and develop their parenting skills. The service

adapts to their changing circumstances, supporting with independent living, keeping safe and reducing risk. Where needed, we also offer 1:1 support in the home.

**“The difference you have made to [my partner] is amazing. She is so confident now. She always talks about all the things she has learnt in group..... [our child] is so sociable now and interacts with anybody, all from coming to group”**  
- Young Dad

82% of young parents last year presented with mental health challenges and social anxieties. This adds an additional barrier to them accessing support or integrating themselves into their local community. Home-Start's person centred, patient and non-judgemental approach helps to break down barriers and build trusted relationships which aids their transition into group provision.

In Autumn 2023, we were granted £1000 from the Jimmy Dickinson Fund for a

mental health project, via One Community. We provided young parents with a 4-week project of activities; outings; coping strategies and resources. Parents' feedback evidenced the positive impact this project has had on their ability to manage their own mental health.

**“I have now got the confidence to start cooking from scratch and have used the recipe book given to me”**

At Home-Start, we recognise that the smallest gestures, positive affirmations and a listening ear can have a huge impact on young parents, their self-esteem and resilience. We regularly work alongside other key professionals to ensure young parents have the best possible support to achieve positive outcomes.

**[Social worker] shared at a Looked After Child review how impressed she is with Home-Start support after several of her families have previously been supported by the Young Parents' Service.**

We have worked in partnership with Kirklees Wellbeing Service; Kirklees Libraries, University of Huddersfield; Domestic Abuse Community Engagement Team, SEND Local Offer and Sexual Health Service who have all supported delivery of group sessions. We have opened local community provision access for families with visits to local parks, play gyms and the leisure centre. These are often out of reach for many families who do not have the finances, local knowledge or confidence to attend alone.

The volume of referrals to the Young Parents' Service highlights the continuing need for this vital specialist provision within Kirklees. Young parents often require intensive and long-term support – for those who ended support last year, their average length of support was 10 months. They dislike a change of faces and engage better with a consistent key worker who will support them with their individual life challenges to ensure they remain safe, avoid risk, and can provide a stable and secure foundation for their children.



**former young parents have been trained and upskilled into volunteering roles in groups sessions to provide peer support this year to other young parents referred into the service**



**88%**

**of young parents reported an improvement in their emotional wellbeing**

**97%**

**of young parents felt less isolated & disconnected**

**91%**

**of young parents felt better informed about their child's development**

**80%**

**of young parents were accessing more services**

**90%**

**of young parents reported feeling more resilient**

## Addressing Families' Needs

On receipt of a referral, we are swift to act in setting up an appointment to meet the family for the first time. This is a crucial point in being able to offer much-needed support. Initial contact can be a sensitive meeting where we try to establish a rapport early on. We listen, empathise, and we don't judge. We use our reflective practice and trauma informed approach to ensure we can engage positively with parents at a time when they likely feel most vulnerable.

Many parents and carers are often feeling overwhelmed and frustrated. As parents of very young children in their most formative years of life, they often can feel like they are getting it wrong or not doing enough or are at a loss to know what to do to next or what to try.

The current fuel and food poverty situation is impacting massively on many of our families, and parents find themselves in distressing situations where they are having to choose between keeping their homes warm or putting food on the table. Coldness, lack of good nutrition and poor living conditions impact on mental health enormously. Our work has never been more needed or more vital than it is at this present time.



Families moving into Kirklees over the past few years have been some of our most marginalised and vulnerable. Asylum seeking families, where mothers are alone and pregnant or have just given birth and are residing in temporary accommodation within one room in a hotel have presented to us with additional challenging circumstances. Often, they have no money and limited funds to buy food, clothing, toiletries, nappies, baby milk and transport to move about. They are often traumatised by where they have come from and what they have been through to get here.

Our support for families is often the lifeline they need to help them with moving forward in a positive way. We offer practical help, emotional support, parenting advice, advocacy, signposting and accompaniment to access other support services.

Home-Start prioritises local community needs and addresses health inequalities by supporting families to improve their health literacy and make lifestyle changes e.g. oral hygiene, maternal and child obesity, infant mortality, school readiness, sexual health etc. We support the delivery of the Kirklees Health and Care Plan 2023/28 to improve health outcomes for families focusing on the two 'well' programmes: Starting Well and Living Well.

**95%**  
of families felt their general parenting skills had improved

**92%**  
of parents felt more resilient

**87%**  
felt they could manage their child's behaviour better

**88%**  
of families felt better about their mental health

**89%**  
were accessing more services & community provision

**89%**  
felt their child's emotional health had improved

**88%**  
of families felt less isolated

**95%**  
felt better equipped to manage their child's development

**92%**  
felt their child was more prepared for school

**37%** of families were helped to register with a dentist

**31%** of families were supported with reducing parental conflict

**40** children were assisted into FECC places (Free Early Education and Childcare)

**18%** of parents were supported with ICON (coping with infant crying)

**37%** were supported with meal planning/cooking on a budget

**53%** of families were supported with key school readiness messages and activities

**35%** were supported with healthy eating



## Family Case Study – Mum of children with SEND

Mum informed us that she was struggling with her children's behaviour. She said that in turn, this was affecting her own mental health, and she seemed to be caught in a never-ending stressful cycle. The eldest child had been diagnosed with autism and support was in place at school. He was settled and developing well. Mum felt that she had had to fight for him to get the support that he needed and was relieved that this was now in place.

Mum was recovering from a C-section and trying to settle into life as a mum of 3 young children. She was living with her partner, the father of her new baby. Mum said she was really finding things hard with her middle child, that his behaviour was 'really bad' and she thought that he also had additional needs like his older brother. Mum felt alone and isolated and she was concerned about him starting school and not being able to cope.

We set up a TAF (Team Around the Family) to support mum and to ensure that everyone was working towards the same goals. It emerged that the middle child was struggling at nursery and that he would benefit from some support. A 'My Support Plan' was put in place and an application for an EHCP was completed also.

A volunteer was matched to the family. Mum's partner worked full time so getting out of the house with 3 children was challenging. The volunteer spent time getting to know mum and building trust before they started to go out together. Mum felt comfortable to talk about her mental health. The volunteer suggested things to put in place at home to try and keep the boys in a routine and emotionally regulated.

The middle child started school with 1 to 1 support. He too had been diagnosed with autism and ADHD. School put lots of measures in place to help and support him. Outside of school he was receiving therapy and things were starting to improve, enabling mum to manage his behaviour more easily.

When Covid hit, the volunteer had to move to telephone support. She also did doorstep drops for the children and they could wave through the window on seeing a familiar face. This was a hard time for mum, as her children regulate when outside and they can run off energy. When this was not possible, mum struggled, and the children's emotions and behaviours became harder to manage. Mum was given lots of emotional support and positive affirmations over the phone during this time.

When the children were able to return to school, mum spent more 1 to 1 time with the youngest child. It became apparent to her that he had needs similar to both his siblings. At that point, Mum's mental health declined significantly, and she was struggling to parent 3 children all with very different additional needs. She had said several times that she felt like giving up and that she could not cope. Mum was signposted to specialist mental health support and given crisis line numbers. A further TAF was started that involved school, nursery, Home-Start and Early Support. An early support

assessment was completed, to assess if mum could get any support from Children with a Disability Service for respite. Mum was allocated Family Group Conferencing, to assess if anyone in the family could support and give some respite. The older two children's father engaged in the meetings to see if he could take some pressure off mum and let her have some time to herself.

### Outcomes of support:

Mum has accessed her GP for support for depression and anxiety. The youngest child has a 'My Support Plan' and will be supported with transition into school in September 2024.

Home-Start continued to support mum and to look around secondary schools with provision for children with additional needs for the eldest sibling. Mum advises she is feeling more positive about his future. The middle child is settled at school and mum has learned techniques to manage his more extreme episodes of challenging behaviour.

### Summary:

Whilst the referral at the time stated support with parenting was a need, it was apparent that Mum had struggles with her mental health and this was impacting on family life. Mum said she was tired of constantly having to fight to get support for her children. She has benefited greatly from emotional and advocacy support provided by the Co-ordinator and her volunteer. Mum is now able to manage her mental health better and in turn this allows her to better manage the emotional well-being of the children. Mum is feeling less isolated and more proactive having joined a support group for parents with SEND children, this is helping her realise she is not alone with her thoughts and worries.

Mum knows that she will always find things hard as all her children have individual needs. She is more able to face things now and knows where to go if she needs further support. She is more resilient and confident in her ability to cope with daily family life.

The TAF and Home-Start support will be closing soon. Mum is much more self-sufficient and her self-esteem has greatly improved. By engaging with Home-Start, she has received an essential listening ear and the ability to use her voice when engaging with other professionals.

“Home-Start have been a life saver to my family over the years. Whether it's been advice, support, a listening ear, nothing ever seems too much trouble and I personally don't know what I would have done without their support”  
– Supported Mother



**60** In 2023/2024 Home-Start supported 60 families with SEND children.

## Stakeholder feedback

### Families

“I have never engaged with services due to bad experiences in the past and was unsure that Home-Start would be any different or could do anything to help me. I am so glad I opened the door - they have made a huge difference to my life”

“My volunteer comes once a week to help me to get used to different environments and to integrate into the local community, I hope one day that I will have the confidence to do this on my own”

“Since starting Home-Start I am now able to talk to people, I couldn't speak to anyone before. I'm not lonely so much and get out and about more whereas before I never left the house”

“I would recommend Home-Start, especially to anyone with mental health issues as it's like a safe space to be”

“Thank you for everything you've done over the last couple of years. You've changed our lives in so many ways”

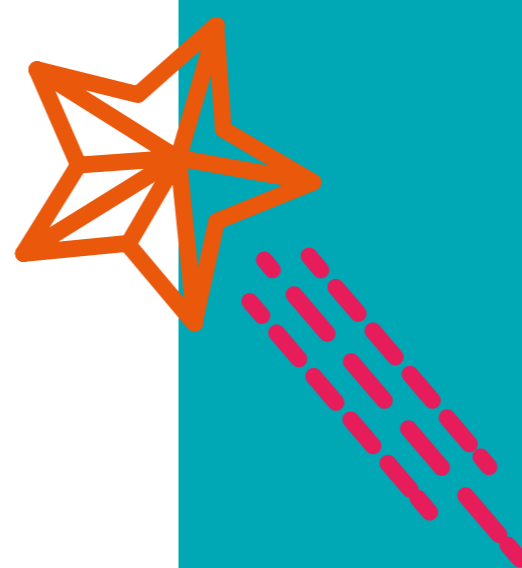
“No one would ever have known about the problem I had with debt. I didn't open the door or answer phone calls due to my anxiety and I never opened my mail. If Home-Start hadn't got involved I wouldn't have made changes. I feel a weight has been lifted from my shoulders and I have got on top of the debt and my budgeting. The help from Home-Start has really pushed me. I can now look forward to going to work without worrying about everything else. Thank you”

“I definitely wouldn't be where I am today without Home-Start's help and for that I'm forever grateful”

“It has really helped me coming to group sessions as it has made me realise that other people have struggles too. They might not be the same as mine, but I am not on my own with finding being a parent hard”

“I have grown in my confidence, made new friends and now got my anxiety under control. I feel better in myself and I am just starting to see the change in my confidence”

“You are so kind. We are really touched and grateful to you and Home-Start. Thank you”



### Referrers

“The difference you have made to XXX is amazing. She is so confident now. She always talks about all the things she has learnt in group support”

“When I saw her yesterday she had had a lovely time at group, she was really talkative and was lovely with her son. She didn't flinch at his nappy changes, she spoke to him gently all the time and kept kissing his head when he was on her knee”

“XXX is absolutely delighted and feels much more positive about everything. She felt you were encouraging and supportive and completely put her mind at ease, so thank you. I was also really impressed with the response and support from your service so please pass on our feedback to your team”

### Volunteers

“Super friendly welcome and atmosphere throughout. Really informative and has fostered more enthusiasm to start volunteering. Very friendly and down to earth, made the training interesting”

“Really good session, it put my mind at rest and it was good to meet everyone in an informal class. Excited to know more - a real eye opener”

“The session was emotional but I felt safe and valued”

“Lots of activities to help think about keeping safe and the importance of confidentiality”



## Director's Report

Over the last year, we have supported more families than ever before. Requests for support continue to rise and more families are reaching out because they are struggling with everyday family life. In 2023-24 we received 269 referrals for support. The rising cost of living, isolation, mental health and struggles with parenting are all prevalent issues for families needing help. We have an incredible workforce of dedicated volunteers and staff who work tirelessly to help families who are facing difficulties. They offer essential compassionate support, a much-needed listening ear, practical help and a wealth of information and guidance in order to help parents feel better able to cope, make positive choices and be more confident in their own abilities.

Our volunteers, staff and trustees remain committed to sustaining and growing our charitable work so that we are able to support more families in need when they reach out to us. Our families have faith and trust in our services which allows our work together to achieve good outcomes. We are passionate about ensuring that parents have the positive affirmations needed when they are feeling low and isolated, and that we help grow their resilience and confidence to be able to independently manage and flourish without our interventions or need for statutory services.

We would like to thank our families for trusting us and welcoming us into their homes. It is always heart-warming to see them overcome their challenges and recognise their own abilities.

Thank you to our funders, partners and wider stakeholders who have all contributed to our efforts over the last year in making a difference for families. And finally, thank you to our amazing volunteers who have hearts of gold and willingly give their time and share kindness because they care about their communities and want to help others.

**Kerri Flanagan**

Director



## Business Development

It has been a busy year in business development, exploring many new initiatives and forging new relationships across the district. Our focus has been on the development of key infrastructure that will allow for further growth in years to come. There are new processes in place to manage grant applications, satisfy stakeholders and increase our online presence to help us reach more families.

Our online presence has seen significant growth, with a new social media strategy now in place and a full revamp of our website planned thanks to funding from Redcentric. We hope that these changes will have a significant impact in the way we can communicate with our families, volunteers and supporters. We have also been working with University of Huddersfield on some exciting research to aide us in our development in the digital world.

We've experienced some good success with our community funding, raising over £12,500 via our Big Give campaigns to help tackle child poverty and improve isolation and loneliness in young parents. A huge thank you to everyone that supported these campaigns.

Business development continues to be a key focus in our strategic planning and we are incredibly grateful to all of our supporters this year: One Community, Pears Foundation, The Big Give, Sir George Martin Trust, Tudor Trust, Henry Smith, Garfield Weston, The National Lottery Community Fund, Society for the Holy Child Jesus, Lloyds Bank Foundation, UKH Foundation, Wooltex, Hansons Logistics, One17, Towngate plc, Redcentric, Topinambour Trust, Reliance Precision Ltd, Syngenta, Slaithwaite Community Toddler Group, Paradigm Creative.

**Amy O'Neill**

Business Development Manager

**“We’ve always been proud of our roots as a Huddersfield creative business. We’ve had plenty of support and loyalty over the years, which has contributed to our success. We feel therefore it’s only right to give back - to support charities and to help more people by giving them a louder voice. To this end, we’re proud to support Home-Start Kirklees”**  
**- Paradigm Creative**

## Treasurer's Report

I am honoured to present this report, succeeding David Mason, who served as Treasurer for seven years. I sincerely thank the team for their warm welcome and guidance over the past year.

Despite uncertainties around future funding, Home-Start Kirklees remains in a solid financial position. Through diligent management, we have preserved healthy reserves and continued our vital services without interruption; while ensuring we are well-prepared to handle any upcoming challenges.

This year has been challenging due to funding uncertainties following the dissolution of the Thriving Kirklees Partnership. Nevertheless, our team's efforts resulted in securing £252,766 in grants and donations. Despite the decommissioning of the Thriving Kirklees Partnership in March 2024, we received £369,147 during the year, accounting for 56% of our income. We also raised £252,766 in additional funds, with significant contributions from The Garfield Weston Foundation, Henry Smith Charity, The Tudor Trust, The National Lottery Community Fund and Lloyds Foundation.

To manage costs amid funding uncertainties, we suspended referrals to our Young Parents' Service at the beginning of the financial year and delayed staff appointments for a time. This measure helps to control expenditure, with only a modest increase of 5% reported, with costs for the year totalling £610,843. We continue to closely monitor future funding and adjust our plans as necessary.

As of March 2024, our funds total £374,955, a 15% increase from last year. These include unrestricted funds of £47,959, designated funds of £330,787, and restricted funds of £3,792.

**Andrew Smith**

Treasurer



### Trustees

Vanessa Stirum, David Mason, Andrew Smith, Karl Yates, Clare Mulgan, Julie Grindley, Kieran Brady, Pegah Parandian, Joanne Hardcastle (resigned September 2023), Tracy Sheldon (resigned September 2023)

## Staff

Kerri Flanagan	Director
Michelle Steadman	Operational Manager
Amy O'Neill	Business Development Manager
Sarah Christian	Senior Co-ordinator
Shabana Amin	Co-ordinator
Christie Lanquetin	Co-ordinator
Rachel Gordon	Co-ordinator
Kate Cooper	Co-ordinator
Marina Taylor	Senior Group Co-ordinator
Rosanna Todd	Group Co-ordinator
Maggie Baines	Group Co-ordinator
Katie McCrea	Group Worker
Amy Covell	Family Support Worker
Katy White	Family Worker
Heidi O'Shea	Volunteer Co-ordinator
Emma Franks	Administration & Finance Manager
Mandy Wain	Administrator

This is a summary of the statutory accounts which have been approved by the trustees. The full annual accounts and the Trustees Annual Report, together with the Independent Examiner's report, can be obtained from the registered office. They will be submitted to the Charity Commission following the AGM.

## Summary Accounts for the Year ended 31 March 2024



	2023/24	2022/23
<b>Incoming Resources</b>		
Statutory Agencies	406,957	413,772
Charitable Trust Funds	232,297	172,694
Other Donations	15,468	24,262
Gift Aid	-	-
Interest	6,345	798
Other income	-	-
	<b>661,068</b>	<b>611,526</b>
<b>Resources Expended</b>		
Salaries, NI and Pensions	488,289	455,992
Coordinators' and Volunteers' Expenses	15,566	14,139
Contribution to National Home-Start	11,007	10,191
Other Charitable Expenses	20,072	21,507
Rent	29,661	25,573
Computer and Office Costs	46,248	47,612
Relocation Costs	-	7,438
	<b>610,843</b>	<b>582,451</b>
<b>Net (Expenditure)/Income for the Year</b>	50,225	29,075
Income deferred from last year	-	-
Resourced from previous years	324,730	295,655
<b>Resources at year end</b>	<b>374,955</b>	<b>324,730</b>
<b>Represented by:</b>		
Fixed Assets	5,798	5,884
Cash at bank and in hand	558,455	428,559
Debtors	-	92,291
	<b>564,253</b>	<b>526,734</b>
<b>Less</b>		
Income received in advance	179,158	190,976
Other creditors due within one year	10,141	11,028
	189,298	202,004
	<b>374,955</b>	<b>324,730</b>

For more information please contact:

# HOME START

## Kirklees

1st Floor, Bates Mill, Colne Road, Huddersfield HD1 3AG

T: 01484 421925 E: [info@homestart-kirklees.org.uk](mailto:info@homestart-kirklees.org.uk)  [hskirklees](https://www.facebook.com/hskirklees)  [@HStartKirklees](https://twitter.com/HStartKirklees)

[www.homestart-kirklees.org.uk](http://www.homestart-kirklees.org.uk)

Charitable Incorporated Organisation, registered with the Charity Commission. Registered Charity Number 1099770



Society of the Holy Child Jesus CIO  
ACTIONS NOT WORDS

LLOYDS BANK FOUNDATION  
England & Wales



one community the Tudortrust